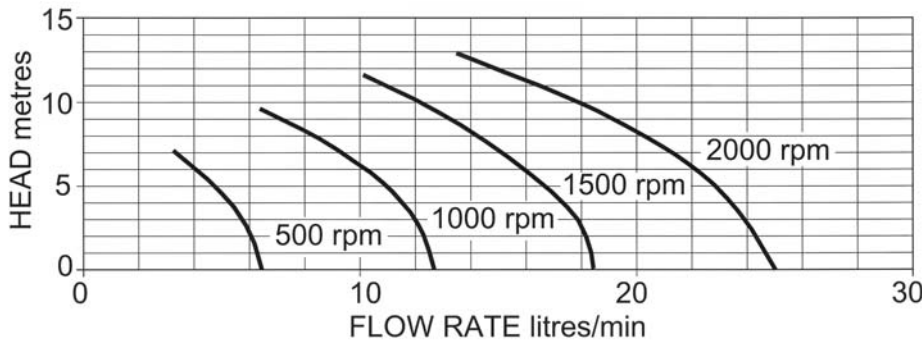


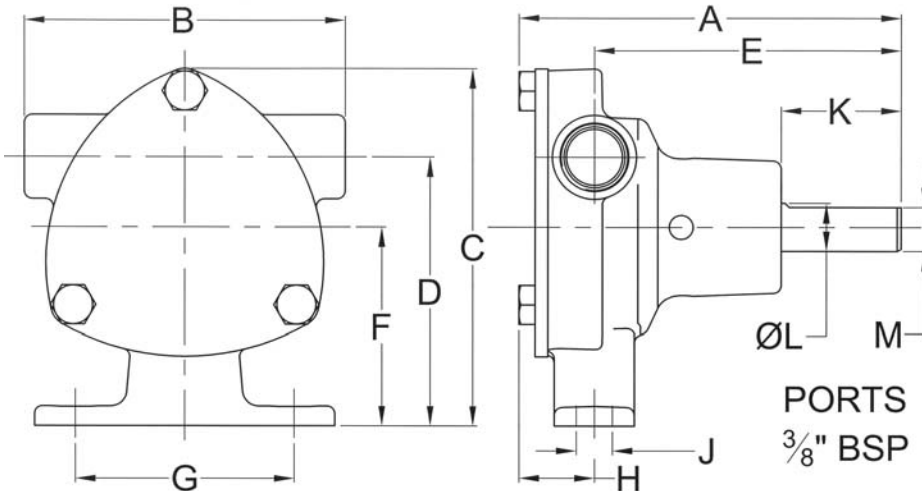
**PERFORMANCE:**



MODEL	Maximum flow rate		Maximum head	
	l/min	gall/min	metres	feet
51520-2001	25	5.5	13	43

**DIMENSIONS:**

**WEIGHT: 0.67Kg**



A	B	C	D	E	F	G	H	J	K	L	M
95	80	90	68	77	50	55	19	9	30	Ø12	11

**MATERIALS OF CONSTRUCTION:**

<b>Body</b>	Bronze
<b>Impeller</b>	Neoprene
<b>Shaft</b>	Stainless steel type 316
<b>Shaft seal</b>	Mechanical, Carbon-Ceramic
<b>Bearings</b>	Sealed ball bearings
<b>Port type</b>	3/8" BSP to BS21 (DIN2999)

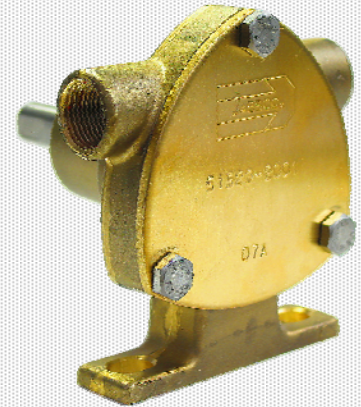
**MODELS:**

51520-2001 Standard Neoprene Impeller



**BRONZE FLEXIBLE  
IMPELLER  
PEDESTAL PUMP**

**51520 SERIES**



**PUMP with  
3/8" BSP PORTS**

- ◆ Constructed from marine quality bronze and stainless steel
- ◆ Self-prime from dry up to 1.5m
- ◆ Easy to service and maintain
- ◆ Will tolerate abrasive wear
- ◆ Handles hard and soft solids without clogging
- ◆ Can pump in either direction
- ◆ Will not airlock